

SISTO-CSPV Topworks for secure sampling



Applications:

Hygienic und sterile handling of fluids in the food and beverage industries, pharmaceutical industry, biotechnology

Further information:

www.sisto-aseptic.com



SISTO-CM511



SISTO-C

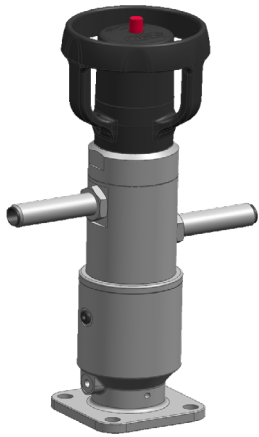


SISTO-CM1200

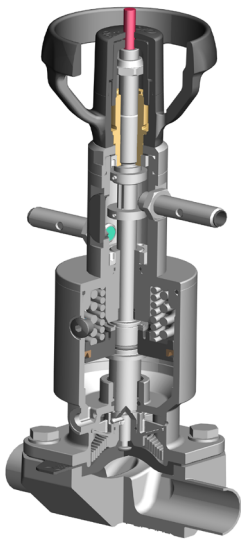
Your contact:



SISTO-CSPV Topworks for secure sampling



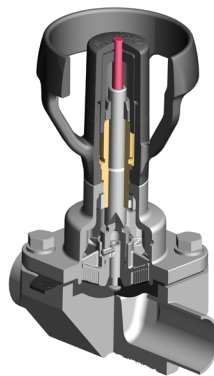
The SISTO-CSPV is a manual sampling valve equipped with a pneumatic actuator as an additional safety component. The handwheel can only be operated when the pneumatic actuator is supplied with compressed air. If the compressed air in the actuator fails, the valve closes and the handwheel and the point of use are locked and can no longer be actuated. That way any unwanted sampling is prevented.



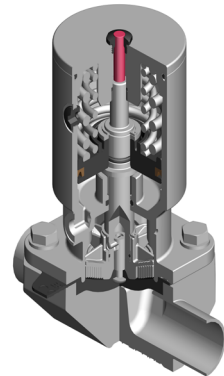
- Increase of plant safety and employee protection
- Secure sampling is guaranteed due to the interaction of a pneumatic and a manual actuator
- The positions of both actuators can be monitored centrally via two inductive proximity sensors
- Targeted process monitoring through integration into the process control system
- Travel stop in open and closed direction
- Hermetic sealing to atmosphere and tight shut-off due to enclosed and spiral supported diaphragm
- Suitable for CIP/SIP
- Optional stainless steel handwheel

Material

Body	1.4435 ; 1.4539 and various Hastelloy qualities
Bonnet	1.4409
Diaphragm	SISTOAseptiXX EPDM SISTOAseptiXX TFM-bonded SISTOAseptiXX TFM/EPDM 2-piece



SISTO-C manually operated valve



SISTO-C valve with pneumatic actuator